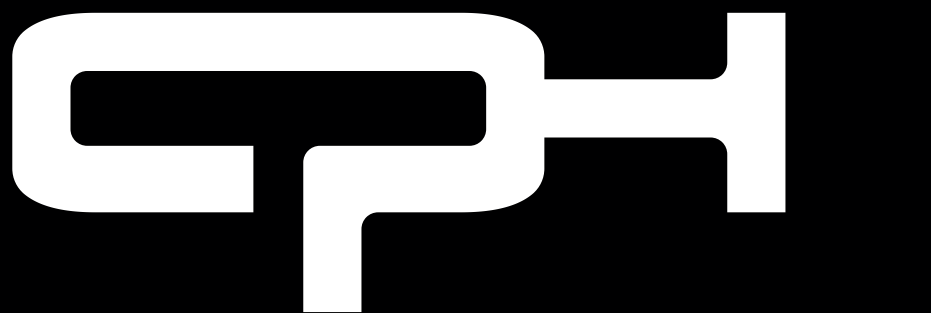


2008



LIGHTING

CPH LIGHTING
CLASSIC AND MODERN

PH
LIGHTING

NEW PRODUCT

Papilio is the birth of a new butterfly species.
Inspired by the wings of the swallow tale
butterfly.
Designed for people who value and insist that
aesthetics and functionality go hand in hand.



Design Morten Flensted

PAPILIO



NEW COLOURS



OBLIQUE

Perfect reading light in an elegant and functional design.

Now available in three new colours: glossy red, glossy white and glossy black.

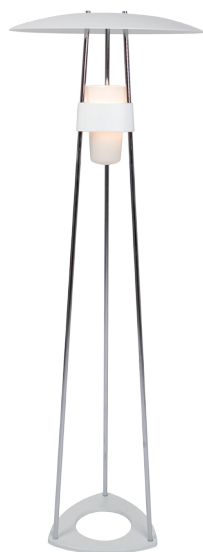
NEW COLOUR



DING-DONG

Functional reading light with strength and character.

New glossy red with yellow wire.



SEAGULL

General light and reading light in an outstanding design.

BASIC

Classic design with a high light output.

New version and new colours: glossy white and glossy black.

NEW VERSION



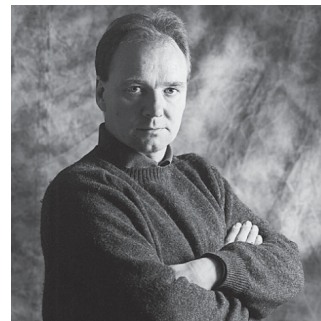


Morten Flensted (1965)

Industrial Designer from Designskolen Kolding, and trained as an Electronics Engineer and Electrician. Eight years of work experience as production manager in the high-end audio industry.

A designer with a thorough knowledge about construction and materials, and with an eye for the functional, aesthetical, and clever detail.

CPH
LIGHTING



Tom Stepp (1950)

Trained as a building technician, a construction engineer and an architect from The Royal Danish Academy of Fine Arts. A versatile designer, renowned for his unpretentious and functional designs.



CPH Lighting

c/o P'light

Bytoften 2

DK-6710 Esbjerg V

Tel +45 75180106

Fax +45 75180109

mail@plight.dk

CPH LIGHTING

WWW.CPHLIGHTING.DK